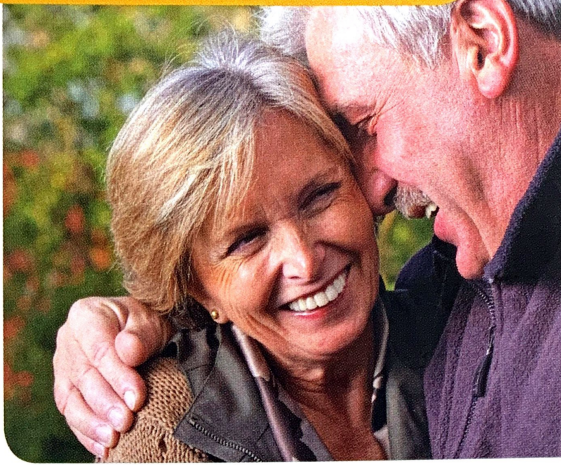


Effective Treatments for
Male Incontinence



Discover your
permanent solution.





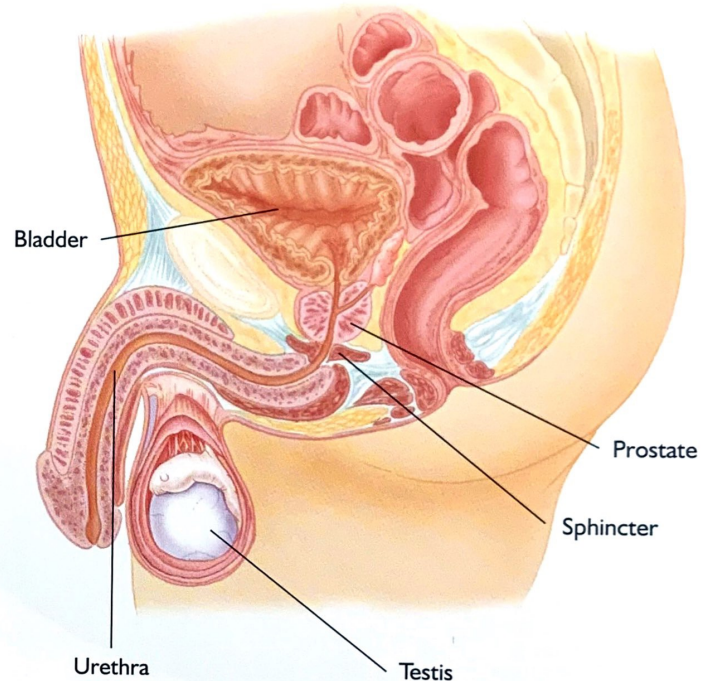
Male urinary incontinence is usually caused by a damaged sphincter, the circular muscle that controls the flow of urine out of the bladder. When damaged, often the unavoidable result of prostate cancer surgery, the muscle cannot squeeze and close off the urethra. This causes urine to leak.

Treating Incontinence and Restoring Your Quality of Life

Persistent incontinence can limit your activities... keep you homebound... in costly, messy pads... dealing with the frustration and embarrassment, and the constant fear of leaking and odor. But the reality is, you don't have to live with bladder control problems anymore. Today there are real solutions that can resolve incontinence for good, so you can get back to the things you love, with confidence and control.

Types of Incontinence

- **Stress Urinary Incontinence (SUI)** – The most common type of incontinence following prostate cancer surgery, SUI occurs when you leak urine during a physical activity like lifting, exercising, sneezing and coughing.
- **Urge Incontinence** – Occurs when you have an overwhelming need to urinate and are not able to hold urine long enough to reach a toilet.
- **Overflow Incontinence** – When your bladder never completely empties, which causes urine to leak.
- **Total Incontinence** – When the urinary sphincter muscle is completely deficient, the result is continual leakage of urine with no control.



In men, the urinary sphincter muscle is located below the prostate. The sphincter muscle surrounds the urethra.

When the sphincter muscle tightens, it holds urine in the bladder. When it relaxes, the bladder contracts and the urethra opens, allowing urine to flow outside the body.

When the sphincter muscle is damaged, it cannot close off the urethra.

Stress Urinary Incontinence (SUI) Quiz

This standard quiz helps evaluate your level of incontinence and can be a useful tool in discussing your progress with your doctor.

1. Do you ever experience unplanned, sudden urine loss either while sleeping or during the day?
 Yes No
2. Do you experience leakage while laughing, sneezing, jumping or performing other movements that put pressure on the bladder?
 Yes No
3. Do you have trouble holding urine as you hurry to the bathroom?
 Yes No
4. Do you frequently experience a sudden and immediate urge to urinate?
 Yes No
5. Have you noticed a change in your frequency of urination?
 Yes No
6. Do you visit the bathroom to urinate more than 8 times per day?
 Yes No
7. Do you currently wear pads or liners to protect against unplanned leaks?
 Yes No
8. When planning a trip, outing or event, does the availability or location of the restroom facilities affect your decision?
 Yes No

Bring this to your next appointment for a valuable discussion with your doctor.

Source: <http://maleincontinence.com/overview/facts.htm>



Common Causes of Incontinence

- Prostate cancer surgery (radical prostatectomy or TURP)
- Conditions such as diabetes, multiple sclerosis, Parkinson's disease or stroke
- Pelvic trauma
- Birth defects

Treatment Options

There are a number of ways to deal with incontinence, ranging from ongoing management to permanent surgical solutions.

- **Absorbent Products** – Pads, diapers and absorbable garments are frequently used to manage incontinence.
- **Internal Collection Devices** – Catheterization on a regular basis may be employed for certain men to ensure that the bladder is emptied on a regular schedule.
- **External Devices** – Condom catheters can be used to collect urine, and clamps can be used to block the flow of urine.
- **Biofeedback/Electrical Stimulation** – Can help patients gain awareness and control of their urinary tract muscles.
- **Collagen Injections** – Injections of bulk-producing agents, such as collagen, into the urinary sphincter.
- **Surgical Options** – These range from implantable “male sling” procedures designed to support the muscles surrounding the urethra, to implanting an artificial urinary sphincter which mimics the function of a normal, healthy sphincter.



Permanent Surgical Solutions

Many men seek a permanent solution rather than deal with continually having to wear pads, limit their activities and worry about leakage. You and your doctor may determine that the best way to treat your incontinence is with one of these effective surgical options.

AdVance® Male Sling System

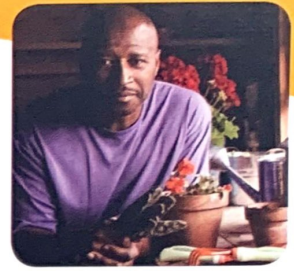
How it Works

This innovative, safe and effective outpatient procedure involves placing a small sling made of synthetic mesh inside the body through small incisions. It supports the urethra, restoring normal bladder control. Most patients are continent immediately following the procedure, and can resume normal, non-strenuous activities shortly thereafter.



"I was a couch potato because of my incontinence and had had enough. The AdVance Male Sling has made me dry now and I walk my dog, work out at the gym and have lost over 35 pounds. I feel like a whole man again."

– Barry B., Patient



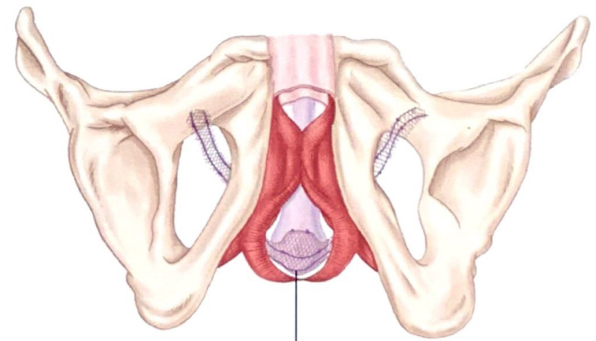
Benefits

- Outpatient surgery
- May be performed under spinal or general anesthesia
- Recovery is often rapid — results may vary
- Often no catheter necessary upon discharge
- No device activation required
- Immediate improvement
- Restored dignity and quality of life

AdVance is not for people with:

- Urinary tract infections
- Blood coagulation disorders
- Compromised immune systems or any other condition that would compromise healing
- Renal insufficiency and urinary tract obstruction

Speak with your doctor to determine if AdVance is right for you.



Sling Placement on Urethra

InVance® Male Sling System

How it Works

This minimally invasive surgical procedure also involves placing a mesh sling inside the body. Rather than supporting the urethra like the AdVance sling does, the InVance sling works by placing pressure on the urethra to reduce the possibility of urine leakage. Most patients are continent immediately following the procedure, and can resume normal, non-strenuous activities shortly thereafter.



"The AMS InVance Sling gave me immediate relief. I am able to go about my busy day without worrying about wet spots."

– Ben F, Patient



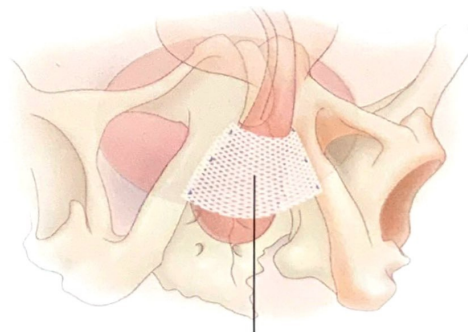
Benefits

- Outpatient surgery
- May be performed under spinal or general anesthesia
- Single, small incision in the perineum only
- Recovery is often rapid
- Often no catheter necessary upon discharge
- No patient activation required
- Immediate improvement
- Restored dignity and quality of life

InVance is not for people with:

- Urinary tract infections
- Bone deformation or severe osteoporosis
- Compromised immune systems
- Renal insufficiency and/or urinary tract obstruction
- Previous or active osteomyelitis, among other medical issues

Speak with your doctor to determine if InVance is right for you.



Sling Placement on Urethra

MODERATE TO SEVERE INCONTINENCE

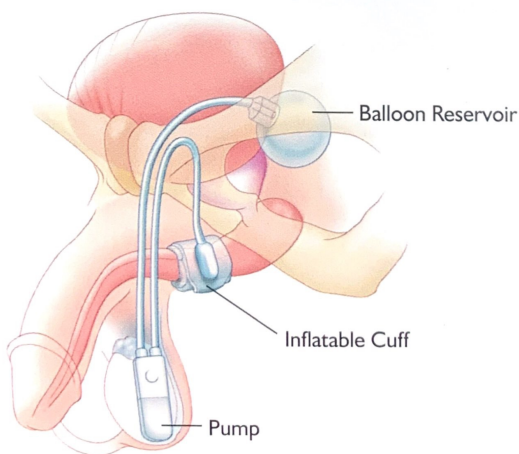
AMS 800® Urinary Control System

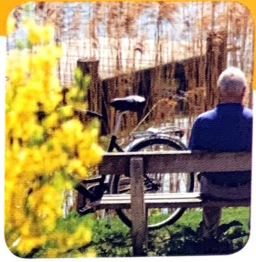
How it Works

A device known as an artificial urinary sphincter is placed completely inside your body to provide simple, discreet urinary control. It mimics a healthy sphincter, keeping the urethra closed until you want to urinate. It consists of a connected system of a pump (implanted in the scrotum), an inflatable cuff (around the urethra), and a balloon reservoir (implanted in the abdomen).

You control urination by squeezing and releasing the pump, which moves fluid out of the cuff that is compressing the urethra, and back into the reservoir. Because the empty cuff is no longer pressing the urethra closed, urine can flow out of the bladder.

After you've emptied your bladder, the fluid automatically returns from the reservoir to the cuff, squeezing the urethra closed again.





Benefits

- The gold standard for treating incontinence due to intrinsic sphincter deficiency
- Effectively gives most men the ability to achieve continence
- Published clinical data shows long-term effective results

The AMS 800 is not for those men:

- Who are not good candidates for surgical procedures or anesthesia
- With an irreversibly blocked lower urinary tract
- With irresolvable detrusor hyperreflexia or bladder instability
- With a known allergy or sensitivity to rifampin, minocycline or other tetracyclines

Speak with your doctor to determine if AMS 800 is right for you.

“There’s no other operation that I do in urology that has as happy a patient population and outcome as placing an AMS 800.”

– Timothy Boone, M.D., PhD.

Ask Your Doctor

About the solution that's right for you.

As with any surgical procedure, inherent risks are present. Although rare, some of the most severe risks may include infection and erosion, surgical, physical, psychological or mechanical complication. If these occur, they may necessitate revision or removal of the device. For additional product and risk information, visit www.AmericanMedicalSystems.com.

Call your urologist and make an appointment to determine if one of these solutions is right for you.

AMS *Solutions for Life®*

American Medical Systems, Inc.

World Headquarters

10700 Bren Road West
Minnetonka, MN 55343
USA

U.S. Toll Free: 800 328-3881

Phone: 952 930-6000

Fax: 952 930-6157

www.AmericanMedicalSystems.com

American Medical Systems

Europe B.V.

Straatweg 66H
3621 BR Breukelen
THE NETHERLANDS

Phone: 31 346 258 100

Fax: 31 346 258 130

American Medical Systems

Australia Pty. Ltd.

Unit 39, Building F

16 Mars Road

Lane Cove 2066

NSW AUSTRALIA

Phone: 61 2 9425 6800

Fax: 61 2 9427 6296

American Medical Systems

Canada Inc.

P.O. Box 461

Guelph, Ontario

N1H6K9 CANADA

Phone: 519 826 5333

Fax: 519 821 1356

© 2010 American Medical Systems, Inc.

All rights reserved. Printed in USA.

600895-01B (02/10)

Photos are for illustrative purposes only. Subjects are professional models and do not necessarily use or endorse this product.