

DISPOSAL OF INJECTION MATERIALS

After use, dispose of all injection materials safely. Your pharmacist will be able to supply a disposable box for syringes.

STORING INTRACAVERNOSAL INJECTIONS

Intracavernosal Injection vials are pre-mixed and packaged as a sterile vial that have been specifically designed to make injections quick and easy. PGE-1, TRI-MIX and QUAD-MIX should be kept in the refrigerator. If you travel, use the special travel kit. For more comfortable administration, allow the loaded injection syringe to warm to room temperature for about 15 minutes prior to injection. Intracavernosal injections can be kept at room temperature (15-30°C / 59-86°F). It is very important that BI-MIX medication not be exposed to temperature above 30°C / 86°F, since this will render the active ingredient ineffective.

FACTORS THAT MAY REDUCE YOUR ERECTION

Anxiety, fatigue, tension and excessive alcohol. Lying on your back too soon after the administration of Intracavernosal Injection may decrease blood flow to the penis, increase leakage of blood out of the penis, and result in the loss of an erection. Using medications that contain decongestants, such as over-the-counter cold remedies, allergy, sinus medications and appetite suppressants, may hinder the effect of penile injections.

Always use a fresh needle and never share a needle with another person when using Intracavernosal Injections. Sharing needles can transmit sexual diseases.

FAILURES

Occasionally, men using this medication do not experience desired results. If this medication does not work for you, please inform one of our pharmacists so that they may discuss with you the proper technique of injecting. If this still produces undesired results, we will consult with your physician on an alternative medication combination that may be more effective. Under the direction of your doctor, some men use vacuum erection therapy on opposite days of using penile injections for increased results.

We at University Compounding Pharmacy, supply a complete line of non-surgical treatments for Erectile Dysfunction including but not limited to: *Penile Injections, Vacuum Therapy Devices, and Oral pills.*

DO NOT RE-USE OR SHARE NEEDLES OR SYRINGES

PENILE INJECTION THERAPY DIAGRAMS

Preparing and Injecting the Medication

It is vital to inject the proper dose into the penis. Always start at the very lowest dose (0.1cc) unless otherwise instructed by your doctor. Wash your hands thoroughly and dry them with a clean towel.



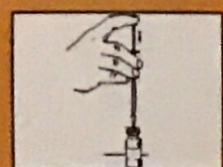
1. Hold the medication bottle so that your fingers do not touch the rubber stopper through which the needle is inserted. Check expiration date of medication.



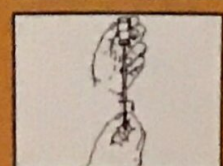
2. Wipe off the top of the vial with an alcohol swab.



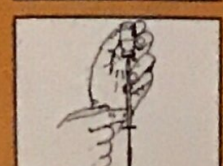
3. Remove the needle cover. Do not allow the needle to touch anything prior to drawing the medication or before injecting the medication.



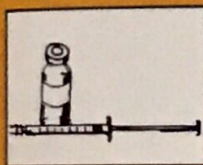
4. Draw an amount of air equal to the amount of medication to be injected into the syringe. Push the needle through the center of the stopper. Push the air into the bottle.



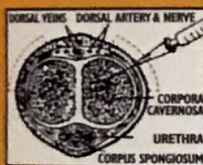
5. Turn the bottle and syringe upside down. Slowly draw the medication into the syringe. Tap the syringe gently to remove any possible air bubbles.



6. Move the plunger in and out several times while tapping the syringe, thus removing all air bubbles.



7. Gently remove the needle from the vial and place the filled syringe within easy reach prior to injection.



8. Use injection site as illustrated. This area is designated on the drawing with crosshatch marks (between 9 and 11 o'clock and 1 and 3 o'clock).



9. Locate the area of injection. Wipe off area with an alcohol swab. Grasp the entire head of the penis. Position the penis along your inner thigh. Maintain grip on the head after cleaning the side of the penis.



10. Grasp the syringe between the thumb and middle finger like a pen. Place the needle on the site of injection at a 90° angle. Push the needle in, gently but firmly.



11. Shift your finger so that your index finger or your thumb can push in the plunger. Push the medication in slowly - over 8-10 seconds.



12. Remove the needle. Apply pressure with your index finger on the injection site and your thumb on the opposite side of the penis. Apply pressure for 2 minutes. Gently massage the shaft of the penis and (do not lie down) keep yourself upright for 10-15 minutes.

PHYSICIAN
 Name: _____
 Address: _____
 City, State, Zip Code: _____
 Phone: _____
 DEA#: _____ LIC#: _____
 Fax: _____
 NPI#: _____

PATIENT
 Name: _____ DOB: _____
 Address: _____
 City, State, Zip Code: _____
 Phone: _____
 Ship to: Patient's Address Physician's Office

- PGE-1 in Normal Saline**
 10mcg/ml 10ml
 20mcg/ml 10ml
 40mcg/ml 10ml
 - Tri-Mix 5-.5-15** 5ml 10ml
 PGE-1 5mcg/ml
 Phentolamine 0.5mg/ml
 Papaverine 15mg/ml
 - Tri-Mix 20-2-30** 5ml 10ml
 PGE-1 20mcg/ml
 Phentolamine 2mg/ml
 Papaverine 30mg/ml
 - Tri-Mix 80-3-25** 5ml 10ml
 PGE-1 80mcg/ml
 Phentolamine 3mg/ml
 Papaverine 25mg/ml
 - Bi-Mix 10ml**
 Papaverine 30mg/
 Phentolamine 0.5mg/ml 10ml
 - Tri-Mix Standard** 5ml 10ml
 PGE-1 8.33mcg/ml
 Phentolamine 0.83mg/ml
 Papaverine 22.5mg/ml
 - Tri-Mix 40-2-30** 5ml 10ml
 PGE-1 40mcg/ml
 Phentolamine 2mg/ml
 Papaverine 30mg/ml
 - Quad-Mix** 5ml 10ml
 PGE-1 10mcg/ml
 Phentolamine 1mg/ml
 Papaverine 30mg/ml
 Atropine 0.15mg/ml
 - Bi-Mix 10ml**
 Papaverine 30mg/
 Phentolamine 1mg/ml 10ml
 - Tri-Mix 10-1-30** 5ml 10ml
 PGE-1 10mcg/ml
 Phentolamine 1mg/ml
 Papaverine 30mg/ml
 - Tri-Mix 60-3-26** 5ml 10ml
 PGE-1 60mcg/ml
 Phentolamine 3mg/ml
 Papaverine 26mg/ml
 - Quad-Mix** 5ml 10ml
 PGE-1 20mcg/ml
 Phentolamine 2mg/ml
 Papaverine 30mg/ml
 Atropine 0.15mg/ml
- Check this box if you have other formulations that are widely prescribed out of your practice.

DIRECTIONS: All sterile medications listed below are in stock and have passed a USP 71 sterility test and pyrogen test as required by State law.

Start at 0.1cc Inject: _____ Refills: _____

SYRINGES #10 PER PACK

- 28G ½ inch 1ml 1 pack 2 packs
- 30G ½ inch 0.5ml Inject-Erect Auto Injector & Travel Pack
- 30G ½ inch 1ml Alcohol Swabs 100/box
- 31G ⅝ inch 1ml (fits Inject-Erect) Sharps Container

SILDENAFIL ORAL SOLUTIONS

- Sildenafil 20mg/ml Sublingual Suspension Take 1 or 2ml under tongue for at least 1 minute, then swallow. 15ml 30ml Refills: _____
- Sildenafil 20mg Lozenges Place 1 or (_____) lozenge between cheek and gums as needed. No more than once a day.
 5 Lozenges 15 Lozenges 30 Lozenges 60 Lozenges: Refills: _____
- Sildenafil 20mg Tablet 60 tablets _____
 Take _____ Refills: _____

VACUUM ERECTION DEVICE (V.E.D.)

- Indicate Dx when ordering V.E.D. V.E.D. will be shipped Fed-Ex Ground.
- N52.31 Post radical prostatectomy N52.01 ED due to arterial insufficiency
- N52.34 Post simple prostatectomy N52.02 Corporo-venous occlusive ED
- N52.1 Diseases classified elsewhere Dx: _____
- N52.2 Drug-induced ED _____

SHIPPING

- First Class Mail (Non Refrigerated Rx) Fed-Ex Ground (Non Refrigerated Rx) Fed-Ex Overnight Fed-Ex Priority

UNIVERSITY SPECIALTY UROLOGICALS & UNIVERSITY COMPOUNDING PHARMACY
 Call: (800) 985-8065 or (619) 683-2005 • Fax: (800) 407-8066 • 1875 Third Avenue, San Diego, CA 92101

Physician Signature: _____ Date: _____

Peyronies Kit: For office administration only. Not for resale or home use.
 Select PGE1 20mcg Tri-mix 10-1-30 Phenylephrine 1mg/ml (5ml)
 100 units #12 200 units #12

Oxytocin Sublingual Tablet (Requires Refrigeration)
 Sig: _____ Refills: _____

Vibrect Pundental Nerve Stimulator for Males
 E.D. Loop Kit (adjustable vasoconstriction device)
 Tetracaine 6% Topical Spray 15ml for PE Spray on glans penis 15 minutes before intercourse.
 Phenylephrine Kit (Priapism) 1mg/ml 5ml Inject: 0.25 0.5
 Personal Lubricant Penile Constriction Ring

WRITE IN CONTROLLED SUBSTANCES

_____ Cypionate 200mg/ml (Sesame Oil)
 Inject: _____ 5ml 10ml Refills: _____

_____ Transdermal Gel 60gm
 Refills: _____

Apply: _____
 50mg/gm (5%) 100mg/gm (10%)

At University Specialty Urologicals we also supply automatic-self injectors. Ask us about it today!

Please fax / attach copies of all insurance cards.

INTRACAVERNOSAL INJECTION FOR THE TREATMENT OF IMPOTENCE (PGE-1, Bi-Mix, Tri-Mix, Quad-Mix)

Dosage for Treatment of Impotence.

You and your physician will determine the proper dose of Intracavernosal Injections.

Erections should last 30 minutes to 1 hour. If the erection lasts longer the patient can bring down the erection by:

1) Taking a cold shower. 2) Applying ice wrapped in a towel on the penis and/or the area between the scrotum and the anus. Note: If you have an erection that lasts more than 3 hours and you have tried the above, see a doctor promptly and take along the medication and package inserts.



Our mission at **University Speciality Urologicals** is to provide quality prescription treatments and solutions for men with Erectile Dysfunction (ED) and men that are simply not satisfied with the quality of their erections. While we offer a full line of non-surgical treatments for ED, the PENILE INJECTION is an excellent choice for many men. Penile injections are easily delivered into the penis. It assists in increasing as well as maintaining blood in the (spongy tissue filled with blood vessels within your penis) Corpora Cavernosa. When properly instructed, most patients are able to sustain a rigid erection for about an hour during intercourse. During your first injection you may be nervous. But by a consultation with your doctor and through practice at home, penile injections will be as simple and effortless as you want it to be. You deserve an ED treatment that works! It's never too early or too late to seek ED management. Talk to your doctor and also contact us today! (Your prescription is attached to this brochure.)

SELECT THE INJECTION SITE

Intracavernosal Injections will be injected into one of the corpus cavernosum chambers of the penis. There are two corpus cavernosum that run the length of the penis. Choose an injection site on one side of the shaft of the penis as shown in Figure 8. AVOID VISIBLE BLOOD VESSELS. With each use of Intracavernosal Injections, alter the side of the penis and vary the site of injection. Do not inject more than three times in one week unless instructed by your doctor.

SIDE EFFECTS - The most common side effects that have been observed using Intracavernosal Injections are:

- Aching in the penis, testicles, legs and in the perineum (area between the penis and rectum).
- Redness of the penis due to increased blood flow
- Light-headedness / Dizziness
- Rapid pulse
- Prolonged erection over 3 hours: **PLEASE NOTE: If your erection is rigid for more than 3 hours, call your doctor promptly or go to the nearest Emergency Room with your medication.**
- Scaring or curvature of the penis if not properly administered

If you have a history of fainting, be sure to discuss this with your doctor prior to using Intracavernosal Injections. If you do experience dizziness or feel faint, lie down immediately and raise your legs. If symptoms persist, call your doctor promptly.



Call us today at (800) 985-8065
to schedule your appointment
or visit us online at www.ucprx.com/urology



PENILE INJECTION

for the Treatment of
ERECTILE DYSFUNCTION

PATIENT INFORMATION & INSTRUCTIONS



UNIVERSITY
SPECIALTY
UROLOGICALS

Tel: (800) 985-8065
Fax: (800) 407-8066

www.ucprx.com/urology

University Compounding Pharmacy
1875 Third Avenue
San Diego, CA 92101



UNIVERSITY SPECIALTY UROLOGICALS
UNIVERSITY COMPOUNDING PHARMACY