

For the treatment of adult men with Peyronie's disease who have a "plaque" that can be felt and a curve in their penis greater than 30 degrees when treatment is started

LUMP OR BUMP, AND
CURVE



Actor portrayals.

IS MY ERECTILE CURVATURE
PEYRONIE'S DISEASE?

There may be
a nonsurgical
treatment option

IMPORTANT SAFETY INFORMATION FOR XIAFLEX®

XIAFLEX® can cause serious side effects, including penile fracture (corporal rupture) or other serious injury to the penis. Receiving an injection of XIAFLEX® may cause damage to the tubes in your penis called the corpora. After treatment with XIAFLEX®, one of these tubes may break during an erection. This is called a corporal rupture or penile fracture. This could require surgery to fix the damaged area. Damage to your penis might not get better after a corporal rupture.

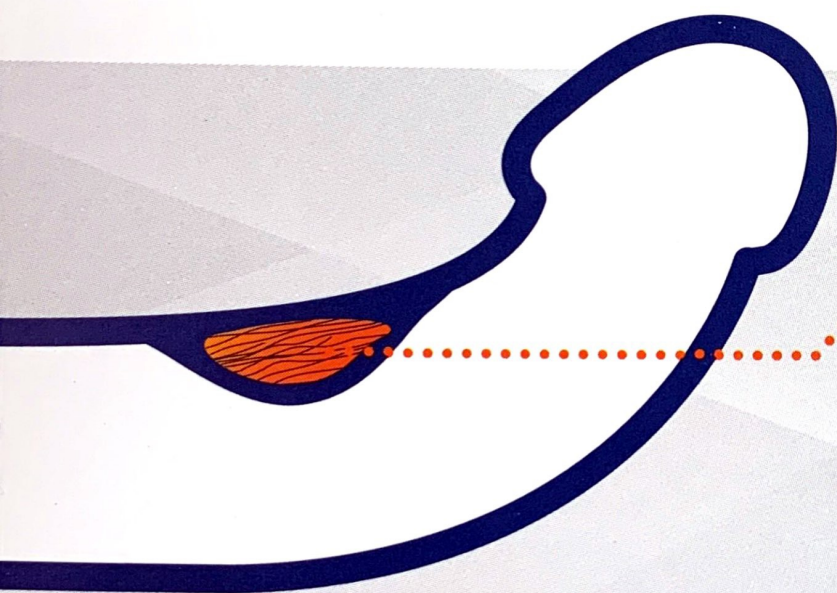
Please see additional Important Safety Information inside and the accompanying full Prescribing Information, including Boxed Warning and Medication Guide, in back pocket.

XIAFLEX®
collagenase clostridium histolyticum

XIAFLEX® is a prescription medicine used to treat adult men with Peyronie's disease who have a "plaque" that can be felt and a curve in their penis greater than 30 degrees when treatment is started.

What is Peyronie's disease?

Peyronie's (pronounced "Pay-ROH-neeZ") disease is the development of scar tissue, also known as a Peyronie's plaque, under the skin of the penis that causes erectile curvature. Peyronie's disease is unlikely to go away on its own and may get worse over time. **That's why speaking to your urologist about it is so important.**



Peyronie's plaque

While the exact cause of Peyronie's disease is not known, it is believed to be caused by an injury or repeated trauma to the penis and/or genetic factors.

Please see additional Important Safety Information on next page and throughout this brochure.

Please see the accompanying full Prescribing Information, including Boxed Warning and Medication Guide, in back pocket.

For more about
Peyronie's disease,
visit xiaflex.com

Peyronie's disease is more common than you might think



UP TO 13%

of men may have Peyronie's
disease in the US*

While Peyronie's disease occurs
more often in men between
40 and 70 years old, **it can
occur at any adult age.**

*Based on a survey of more than 11,000 adult men with diagnosed Peyronie's disease in the US, a history of seeking care for the disease, or having related symptoms.

Some patients with Peyronie's disease may think that it's erectile dysfunction, but Peyronie's disease is different.

Now let's discuss some questions
you may want to ask your urologist

IMPORTANT SAFETY INFORMATION FOR XIAFLEX®

Do not receive XIAFLEX® if you:

- have been told by your healthcare provider that the Peyronie's plaque to be treated involves the "tube" that your urine passes through (urethra)
- are allergic to collagenase clostridium histolyticum or any of the ingredients in XIAFLEX®, or to any other collagenase product. See the end of the Medication Guide for a complete list of ingredients in XIAFLEX®

XIAFLEX®
collagenase clostridium histolyticum

Talk to your urologist about your erectile curvature

You may feel uncomfortable discussing erectile curvature with your urologist. Rest assured that your urologist is used to talking about these kinds of things and is familiar with this condition, which could be Peyronie's disease.

Here are a few questions to get the conversation started:

- Is my erectile curvature Peyronie's disease?
- Is my curve 30° or more?
- Do I have a lump or bump that can be felt?

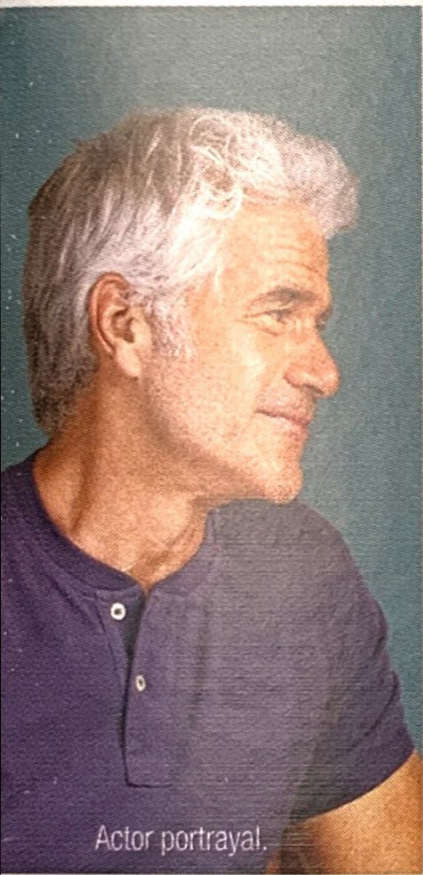
IMPORTANT SAFETY INFORMATION FOR XIAFLEX® (cont)

XIAFLEX® can cause serious side effects, including:

1. **Penile fracture (corporal rupture) or other serious injury to the penis.** Receiving an injection of XIAFLEX® may cause damage to the tubes in your penis called the corpora. After treatment with XIAFLEX®, one of these tubes may break during an erection. This is called a corporal rupture or penile fracture. This could require surgery to fix the damaged area. Damage to your penis might not get better after a corporal rupture.
 - After treatment with XIAFLEX®, blood vessels in your penis may also break, causing blood to collect under the skin (hematoma). This could require a procedure to drain the blood from under the skin

If you're diagnosed with Peyronie's disease, understand your options

For more about Peyronie's disease, visit xiaflex.com



Actor portrayal.

If your urologist says you have Peyronie's disease with a curvature of 30° or more and a plaque that can be felt, ask:

- What are the available treatment options?
- What's involved with each treatment?
- What are the possible side effects?

Learn about a nonsurgical option that may be right for you on page 6

Please see additional Important Safety Information throughout this brochure.

Please see the accompanying full Prescribing Information, including Boxed Warning and Medication Guide, in back pocket.

XIAFLEX[®]
collagenase clostridium histolyticum

XIAFLEX[®] may be able to help

XIAFLEX[®] is a nonsurgical treatment that can be given in a urologist's office. It is an injection that works to weaken and break down the plaque that is causing your erect penis to curve.

Along with gentle stretching and straightening of your penis (called penile modeling), XIAFLEX[®] may be able to help improve your erectile curvature caused by Peyronie's disease.



The only FDA-approved, nonsurgical treatment option for appropriate patients with Peyronie's disease



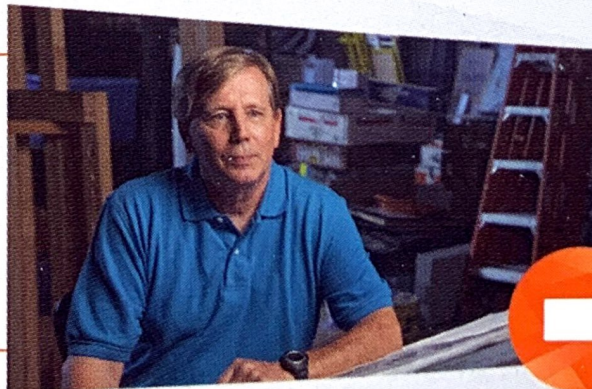
Can be administered in a urologist's office



More than 100,000 injections have been received by patients with Peyronie's disease*

*Based on approximately 21,000 patients, receiving on average approximately 5.1 vials each over their treatment course, between December 2013 and November 14, 2017. Injections performed are estimated based on the number of vials sold.

Hear from real patients about their experiences with Peyronie's disease and XIAFLEX[®] on xiaflex.com



WHAT IS XIAFLEX®?

XIAFLEX® is a prescription medicine used to treat adult men with Peyronie's disease who have a "plaque" that can be felt and a curve in their penis greater than 30 degrees when treatment is started.

It is not known if XIAFLEX® is safe and effective in children under the age of 18.

IMPORTANT SAFETY INFORMATION FOR XIAFLEX®

Do not receive XIAFLEX® if you:

- have been told by your healthcare provider that the Peyronie's plaque to be treated involves the "tube" that your urine passes through (urethra)
- are allergic to collagenase clostridium histolyticum or any of the ingredients in XIAFLEX®, or to any other collagenase product. See the end of the Medication Guide for a complete list of ingredients in XIAFLEX®

XIAFLEX® can cause serious side effects, including:

1. **Penile fracture (corporal rupture) or other serious injury to the penis.** Receiving an injection of XIAFLEX® may cause damage to the tubes in your penis called the corpora. After treatment with XIAFLEX®, one of these tubes may break during an erection. This is called a corporal rupture or penile fracture. This could require surgery to fix the damaged area. Damage to your penis might not get better after a corporal rupture.
 - After treatment with XIAFLEX®, blood vessels in your penis may also break, causing blood to collect under the skin (hematoma). This could require a procedure to drain the blood from under the skin

Please see additional Important Safety Information on next page and throughout this brochure.

Please see the accompanying full Prescribing Information, including Boxed Warning and Medication Guide, in back pocket.

IMPORTANT SAFETY INFORMATION FOR XIAFLEX® (cont)

Symptoms of corporal rupture or other serious injury to your penis may include:

- a popping sound or sensation in an erect penis
- sudden loss of the ability to maintain an erection
- pain in your penis
- purple bruising and swelling of your penis
- difficulty urinating or blood in the urine

Call your healthcare provider right away if you have any of the symptoms of corporal rupture or serious injury to the penis listed above.

Do not have sex or any other sexual activity between the first and second injections of a treatment cycle.

Do not have sex or have any other sexual activity for at least 2 weeks after the second injection of a treatment cycle with XIAFLEX® and after any pain and swelling has gone away.

XIAFLEX® for the treatment of Peyronie's disease is only available through a restricted program called the XIAFLEX® Risk Evaluation and Mitigation Strategy (REMS) Program. For more information about the XIAFLEX® REMS Program, go to www.XIAFLEXREMS.com or call 1-877-942-3539.

2. Hypersensitivity reactions, including anaphylaxis. Severe allergic reactions can happen in people who receive XIAFLEX®, because it contains foreign proteins.

Call your healthcare provider right away if you have any of these symptoms of an allergic reaction after an injection of XIAFLEX®:

- hives
- swollen face
- breathing trouble
- chest pain
- low blood pressure
- dizziness or fainting

Please see the accompanying full Prescribing Information, including Boxed Warning and Medication Guide, in back pocket.

IMPORTANT SAFETY INFORMATION FOR XIAFLEX[®] (cont)

Before receiving XIAFLEX[®], tell your healthcare provider if you have had an allergic reaction to a previous XIAFLEX[®] injection, or have a bleeding problem or any other medical conditions. Tell your healthcare provider about all the medicines you take, including prescription and non-prescription medicines, vitamins, and herbal supplements. Using XIAFLEX[®] with certain other medicines can cause serious side effects. Especially tell your healthcare provider if you take medicines to thin your blood (anticoagulants). If you are told to stop taking a blood thinner before your XIAFLEX[®] injection, your healthcare provider should tell you when to restart the blood thinner. Ask your healthcare provider or pharmacist for a list of these medicines if you are unsure.

XIAFLEX[®] can cause serious side effects, including increased chance of bleeding. Bleeding or bruising at the injection site can happen in people who receive XIAFLEX[®]. Talk to your healthcare provider if you have a problem with your blood clotting. XIAFLEX[®] may not be right for you.

The most common side effects with XIAFLEX[®] for the treatment of Peyronie's disease include:

- a small collection of blood under the skin at the injection site (hematoma)
- swelling at the injection site or along your penis
- pain or tenderness at the injection site, along your penis and above your penis
- penis bruising
- itching of your penis or scrotum (genitals)
- painful erection
- erection problems (erectile dysfunction)
- changes in the color of the skin of your penis
- blisters at the injection site
- pain with sex
- a lump at the injection site (nodule)

Tell your healthcare provider if you have any side effect that bothers you or does not go away.

These are not all of the possible side effects with XIAFLEX[®]. For more information, ask your healthcare provider or pharmacist.

XIAFLEX[®]
collagenase clostridium histolyticum

XIAFLEX[®] Copay Assistance Program

Patient eligibility

Patients qualify for assistance under this program if:

- You are receiving or have received XIAFLEX[®] for an approved indication and in a manner consistent with the instructions for administration of XIAFLEX[®]
- You are uninsured or have insurance that is not provided by Medicare, Medicare Prescription Drug Benefit plans, Medicare Advantage, Veterans Affairs (VA), Medicaid, or similar federal or state programs, and this program is not otherwise prohibited by law
- You are 18 years of age or older
- You have paid or are obligated to pay out-of-pocket costs for a prescription of XIAFLEX[®]

No other purchase is necessary to receive this offer.

For more information, call 1-800-743-2382.

Restrictions, Terms and Conditions

1. By accepting this offer, you agree to report the value received under this offer to any health insurer or other third party paying for any part of your XIAFLEX[®] prescription if you are required to do so by benefit terms, contract, or law.
2. This offer is not valid for prescriptions reimbursed in whole or in part by Medicare, Medicare Prescription Drug Benefit plans, Medicare Advantage, VA, Medicaid, or similar federal or state programs, or where otherwise prohibited by law.
3. By accepting this offer, you agree that Endo Pharmaceuticals Inc. or those working on its behalf may contact your doctor to verify information about treatment that is relevant to verifying your eligibility for this offer.
4. This offer is only valid for doses of XIAFLEX[®] administered in the US.
5. This offer is valid for the out-of-pocket cost for a dose of XIAFLEX[®] only. Offer is not valid for any other products or other out-of-pocket costs (for example, office visit charges, office visit copays, or injection/administration costs), even if those costs are associated with the administration of a dose of XIAFLEX[®].
6. This offer is valid only if you have not used this program within the last 30 days.
7. The selling, purchasing, trading, or counterfeiting of this offer is prohibited.
8. Endo Pharmaceuticals Inc. reserves the right to rescind, revoke, or amend this offer without notice.
9. By participating, you understand and agree to comply with the terms and conditions of this offer as set forth above.

Please see Important Safety Information on pages 7-9, and throughout this brochure.

Please see the accompanying full Prescribing Information, including Boxed Warning and Medication Guide, in back pocket.

Learn more
about XIAFLEX[®]
at xiaflex.com



Actor portrayals.

If eligible,
you'll pay

**\$0 OUT OF
POCKET**

Most eligible patients with Commercial insurance plans paid
\$0 copay* for XIAFLEX[®].

To find out if you qualify,
call **1-800-743-2382**

*Based on analysis of over 4000 claims filed
January 2015 through October 2015.

XIAFLEX[®]
collagenase clostridium histolyticum

For more information,
visit xiaflex.com
or call 877-XIAFLEX
(877-942-3539)

XIAFLEX®
collagenase clostridium histolyticum

ASK YOUR UROLOGIST: Is my erectile curvature Peyronie's disease?

XIAFLEX® is a prescription medicine used to treat adult men with Peyronie's disease who have a "plaque" that can be felt and a curve in their penis greater than 30 degrees when treatment is started.

IMPORTANT SAFETY INFORMATION FOR XIAFLEX®

XIAFLEX® can cause serious side effects, including penile fracture (corporal rupture) or other serious injury to the penis. Receiving an injection of XIAFLEX® may cause damage to the tubes in your penis called the corpora. After treatment with XIAFLEX®, one of these tubes may break during an erection. This is called a corporal rupture or penile fracture. This could require surgery to fix the damaged area. Damage to your penis might not get better after a corporal rupture.

Please see additional Important Safety Information inside and the accompanying full Prescribing Information, including Boxed Warning and Medication Guide, in back pocket.

You are encouraged to report negative side effects of prescription drugs to the FDA. Visit www.FDA.gov/medwatch or call 1-800-FDA-1088.

 **endo**
pharmaceuticals
an endo international company

Rx Only

XIAFLEX® is a registered trademark of Endo International plc or one of its affiliates.
© 2017 Endo Pharmaceuticals Inc. All rights reserved. Malvern, PA 19355
XP-05390/December 2017 www.xiaflex.com 1-800-462-ENDO (3636)